

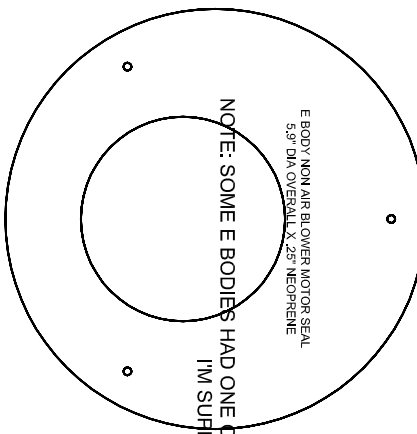
70-74 E BODY HEATER BOX

MISC FOAMS, SCREWS, TUBING

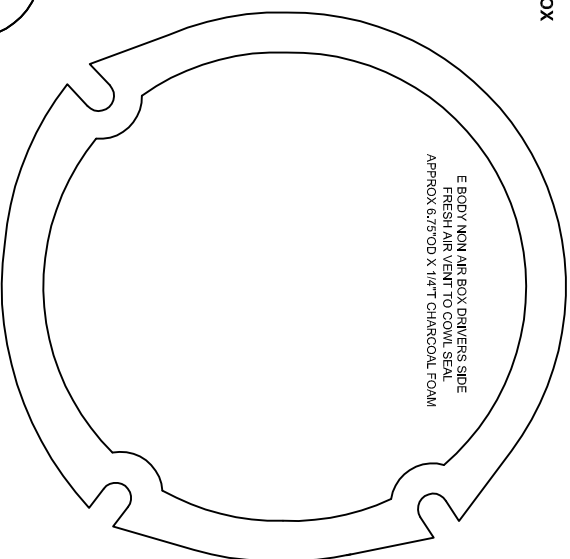
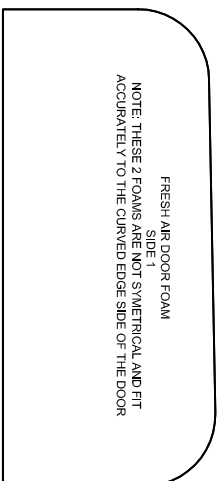
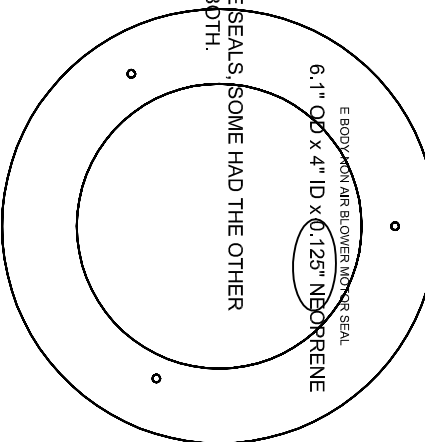
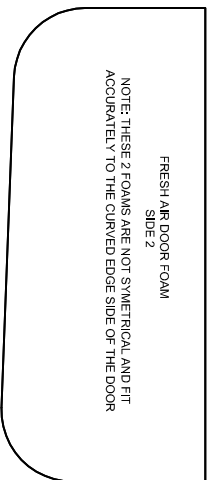
- 6' OF OFF WHITE ROPE CAULK TO SEAL BOX HALVES
- (1) 1-1/2" x 1/2" ID BLACK NEOPRENE FOAM TUBE INSULATION - SMALL HEATER CORE TUBE SEAL TO FIREWALL
- (1) 1-1/2" x 5/8" ID BLACK NEOPRENE FOAM TUBE INSULATION - LARGE HEATER CORE TUBE SEAL TO FIREWALL

NOT INCLUDED (INFORMATIONAL PURPOSES ONLY)

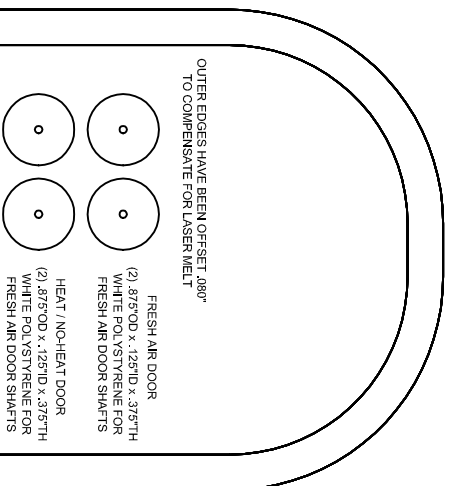
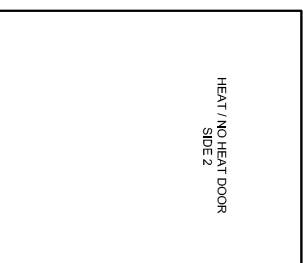
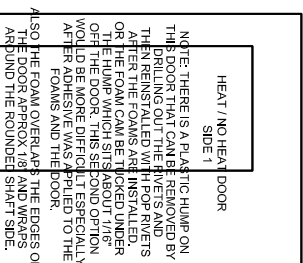
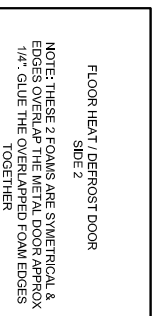
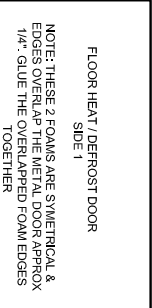
- (9) #10x1/2" SLOTTED HEX HEAD SHEETMETAL SCREWS - (2) CABLE CLIPS - SEE CABLE CLIP NOTE BELOW, (7) MTL BLOWER PLATE TO BOX
- (6) #10x1/2" PLAIN HEX HEAD SHEETMETAL SCREWS - (4) FRT COVER CORNERS, (2) BLOWER RESISTOR
- (2) #8x3/8" NON-SLOTTED HEAD HEAD SHEET METAL SCREWS - BLOW RESISTOR TO FRT METAL COVER
- (1) 10-24x7/8" PHILLIPS PAN HEAD SCREW/WINTGRAL WASHER (SPECIAL) - BOX HANGER/HOOK SCREW
- (10) SMALL 1/2"W "U" SHAPED CLIPS - (6) TO HOLD CENTER VENT CARDBOARD TO BOX, (5) TO HOLD MTL BLOWER PLATE TO BOX
- (9) LARGE 1"W BOX HALF CLIPS
- (2) CABLE CLIPS (THE HEAT/DEFROST DOOR CABLE HAS A MOLDED END WITH SCREW HOLE - NO CLIP USED)



E BODY NON AIR DOOR FOAMS
CHARCOAL FOAM



E BODY NON AIR BOX TO COWL SEAL
APPROX 6.75"W X 8.50"H X .50" NEOPRENE



E BODY NON AIR BOX TO COWL SEAL
APPROX 6.75"W X 8.50"H X .50" NEOPRENE

OUTER EDGES HAVE BEEN OFFSET .080" TO COMPENSATE FOR LASER MELT

FRESH AIR DOOR
(2) .875" OD x .125" ID x .375" TH WHITE POLYSTYRENE FOR FRESH AIR DOOR SHAFTS

HEAT / NO-HEAT DOOR
(2) .875" OD x .125" ID x .375" TH WHITE POLYSTYRENE FOR FRESH AIR DOOR SHAFTS